

# The Messenger



## OCTOBER 2009

Why do we give our time, talent and money to St. Philip's? Because giving is our human response to God's abundant, overflowing grace and love to us. We give because it's good to remember that nothing we have belongs to us anyway. It all belongs to God, and it is only for a brief time—our human lifetimes—that God entrusts those resources to us. So as a clear and visible sign of our thanksgiving, we give to God's work.

When we teach Sunday School or work with our youth, we are thanking God for the privilege of nurturing our children, of helping teach them the language of faith. When we sing in Adult or Youth Choir, or play bells in Bell Choir, we are thanking God for giving us the ability to glorify God with musical gifts. When we offer our gifts of service by being a Lay Reader, Chalice, Acolyte, Crucifer, Usher, Greeter, Bread Baker or Altar Guild member, we are Dear friends in Christ.

Fall has arrived, and with it has come the usual increase in pace, commitments to committee meetings, school functions, sports schedules, etc.

At St. Philip's, we are blessed with good, strong lay leadership, rich and vital worship services, and the appearance of new faces in our worshipping community. Exercising leadership, participating in worship and in fellowship, and reaching out in



hospitality to the newcomers among us are all parts of stewardship. These aspects of parish life involve giving—of our time, gifts for ministry, energy.

There are many ways God calls us to be good stewards: to take care of the natural resources of air, water, grain, oil, etc. that God has given us. God calls us to help care for God's creatures (both two-legged and four-legged.) And of course, in a church community, God calls us to give our time, our talent and our financial resources, for God's ministries and missions thanking God for all the gifts required to do those ministries **and** we help worship to be more meaningful for us all.

When we give St. Philip's offerings of money, out of our financial resources, we give back to God what is God's.

There *is* a practical aspect to the theological one: we pledge or give our time, our gifts for ministry and money to St. Philip's. In another article, you will see more about those practical considerations and guidelines. However, at its core, our stewardship is about God, not you and me. It is about recognizing Who the original Giver was, is, and is to come. When we give in specific ways to a community of faith, we are giving thanks to the Holy One who has given us all that we are and all that we have.

May God bless all that we give back to God, in deep, profound thanksgiving for all of God's blessings to us.

Faithfully, Sheila+



### BLESSING OF THE ANIMALS

October 4<sup>th</sup> is the Feast Day of St. Francis of Assisi, who is known as

the Patron Saint of "animals, birds, the environment, and Italy."

On **Sunday, October 4<sup>th</sup>**, we will celebrate St. Francis and the Blessing of the Animals at the **10:15 service**, which is going to be held **OUTSIDE!**

***Inside this issue:***

|                               |    |
|-------------------------------|----|
| <i>om the Rector</i>          | 1  |
| <i>Save the Nave</i>          | 3  |
| <i>Senior Ministries</i>      | 3  |
| <i>Stewardship Events</i>     | 4  |
| <i>Help the Homeless Walk</i> | 5  |
| <i>Lars Update</i>            | 5  |
| <i>Nuts and Bolts</i>         | 6  |
| <i>Vestry Highlights</i>      | 7  |
| <i>Birthday Blessings</i>     | 9  |
| <i>Calendar of Events</i>     | 10 |

**Animals....continued from p. 1**

We will gather for worship outside in the front church yard, in front of the Parish Administration Wing and the McKee Room.

Why? So you can bring your animal friends to church for a blessing!

Please make sure that all pets are either on leashes, or in pet carriers—we do not want any wars started during worship!



October 4<sup>th</sup> is also the day of the “Help the Homeless” Walk. Parents, if your children and youth want to participate in the “Help the Homeless” Walk at 9:00, and they want to bring their pets for a blessing at the 10:15 service, they can do both. We will arrange to have some folks available in Wyatt Hall to “pet-sit” your fur children while you do the walk for the homeless.

In case of rain, we will have the 10:15 service in Wyatt Hall, as that space is more accessible to the outdoors for restless pets.

Don’t worry—everything you need—music included will be in the bulletin that day, so we won’t have to carry prayerbooks or hymnals outside. And for those of you who are physically challenged, we’ll make sure we have some chairs set up on the sidewalk to make life easier for you.

Remember to ask your friends and neighbors to join us at St. Philip’s for worship at 10:15 on Sunday, October 4<sup>th</sup>—what a great time to bring newcomers to church!

Sheila+

**September Vestry Minutes....continued from p. 7**

October 18<sup>th</sup> there will be a kick-off luncheon and power point presentation.

On Sundays November 29<sup>th</sup>, December 6<sup>th</sup> and December 13<sup>th</sup> there will be food collections and a second plate offering so that we may repeat our good works from last year, filling holiday food baskets for needy families at Laurel Elementary School.

**New Business – Approval of Assembly of God**

**Rental Expansion into Parish Hall:** Joanne Woytek moved, and Doug Hayes seconded the motion to permit the Assembly of God to rent classrooms during their use of our facilities on Sunday afternoons. The motion carried.

**New Business – Continue Ad in Fort Meade**

**Guide for 2010:** Sheila+ will determine the cost of running our ad in the Fort Meade GUIDE. Last year a generous donor paid for the advertisement. With the base realignment, our hope is to attract new parishioners to worship with us.

**New Business – Seminarian at St. Philip’s for late 2010, 2011 and early 2012:**

Sheila+ suggested that St. Philip’s consider serving as a field education site which would allow us to host a seminarian during the fall of 2010, 2011 and the spring of 2012. The stewardship committee offered to pledge \$600.00 to cover the fall, 2010 term. Over the course of two full years, hosting a seminarian would cost \$2,400.00. After discussion of the costs and

*continued on p. 8*

## Senior Ministries



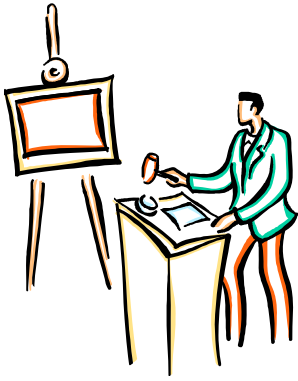
The Episcopal Senior Ministries (ESM) of the Diocese of Washington has a blog with postings on subjects of particular interest to senior adults and their families. The blog by ESM staffers can be found at <http://esmwrites.wordpress.com/>. The latest blog is by ESM Volunteer Coordinator Annie Shaw who writes about preparing for emergencies such as when you need someone to handle your affairs.

Annie also refers to another blog ([www.TheSimpleDollar.com](http://www.TheSimpleDollar.com)) which lists “essential information” important when one is faced with an emergency or disaster. Trent Hamm who writes the Simple Dollar blog suggests the following information among others: 1. a basic emergency plan (such as what you would grab first, where shut-off valves are located, and key people to contact); 2. key information, such as health information, medications, physicians, medical history, etc.; 3. information regarding insurance policies; 4. financial information such as bank accounts, investment accounts, credit cards, etc.; 5. an inventory of possessions; and 6. a list of family and friend contacts. (For additional items, see Annie’s blog at: <http://esmwrites.wordpress.com/>.)

You may find a recent “Your Money” column by Ron Lieber in the *New York Times* (7/2/09) also useful. He mentions a useful form to help organize one’s financial information: ***“Organizing your financial life. Critical information at your fingertips”*** available through Merrill Lynch. You may also obtain the form by clicking on to the link in his column mentioned above.

Arleen Leis

## Save the Nave Silent Auction



If you attended the Annual Meeting last fall, you may recall that St. Philip’s will be launching a capital campaign in 2010. The roof of the nave needs to be replaced, but in order to do so, we first need

to make some structural improvements to the wall. While the details of the capital campaign are still being hashed out, we have already begun to plan for a big kickoff event: a Silent Auction.

The auction will be held in early 2010 at the Phelp’s Center (701 Montgomery St). It will be a catered event and may have live music. We are hoping to draw in members of the Laurel community—not just St. Philippians.

In the meantime, we need your help! Volunteers are needed to help plan, set up, and staff the event. Do you know some good outlets for advertising? Are you an organized person who would like to help catalog auction items? Would you like to take tickets the night of the event? If so, talk to Nate or Kerrie Allen ([nate.allen@gmail.com](mailto:nate.allen@gmail.com), [kerrie.s.allen@gmail.com](mailto:kerrie.s.allen@gmail.com) or 301-725-1576)

Secondly, we are gathering items to auction. Could you offer a weekend at your beach house or one game’s use of your Orioles season tickets? Do you have an artist friend who might donate an original painting? Is there a professional service that you can offer (such as a landscaping consultation or a beauty session)? Do you have contacts at local businesses that might donate a product or gift certificate? Our donations coordinator is Amanda Colindres ([amandaebc@gmail.com](mailto:amandaebc@gmail.com)).

Kerrie and Nate Allen  
Save the Nave Co-Chairs

## Opportunities to Serve!

- At the November meeting of the Region 5 Assembly, we will be voting on nominees to be included in the ballot for the Diocesan Convention. From the Region, lay nominees are asked for Standing Committee, At Large Member of Diocesan Council and the Ecclesiastical Trial Court. Names must be submitted by Oct.16.
- There are qualifications and information about the groups’ functioning. If you are interested, please call Frank Lamancusa 301-774-6221 or Nancy Marchbank 301-776-7547 (after Oct. 10) for further information.



## “K.I.S.S. – Keep It Simple, St. Philip’s” Stewardship Events

In September, the Stewardship Committee gave a sneak-preview of our “K.I.S.S. – Keep It Simple, St Philip’s” annual campaign theme at Ministry Opportunity Sunday when we gave out chocolate kisses and provided baked goods made with chocolate kisses.

Our six-week campaign officially kicks off on Sunday, October 4, with our third-annual BBQ Cook-Off, complete with must-see live entertainment, a.k.a. the Stewardship Committee Skit. The lighthearted skit will introduce the “K.I.S.S. – Keep It Simple, St. Philip’s” theme. You won’t want to miss it, and the food and fellowship are sure to be fabulous as well! (see article on this page for more details about this event.) Proceeds from this event will go to funding a seminarian student for the fall of 2010 and purchasing winter clothes for LARS (Laurel Advocacy and Referral Service) clients.

On the following Sunday, October 11, we’ll have a 9:00 Adult Forum relating to our theme. It’s sure to be a fun and thought-provoking discussion hour. And you never know, we may just have some extra goodies to eat too.

The next Sunday, October 18, is the BIG EVENT... the “K.I.S.S. – Keep It Simple, St. Philip’s” Luncheon in Wyatt Hall from 11:45 to 1:15 pm, complete with fun, interactive activities and a humorous yet thought-provoking short video. We’re very excited about sharing this program with you. It’s a fresh, active program that encourages us to examine the why’s and how-to’s of keeping our lives simple and reflective of our beliefs and values. Abiding by the tried-and-true St. Philip’s motto “if you feed them they will come,” the Stewardship Committee is providing lunch for free – that’s right, a FREE LUNCH! We’re treating you all to sandwiches from Subway, along with an assortment of salads, side dishes, drinks and desserts. Yummy! Since our program is active, we’ll eat lunch first from 11:45 – 12:15 followed by our program activities from 12:15 – 1:15, with dessert capping off our time together. We are also making arrangements to have childcare available in the nursery.

We hope that you all enjoy these events, and as you do, that you will also consider how your financial pledge for 2010 to the ministries and mission of St. Philip’s can be a part of keeping your lives simple and reflective of your beliefs and values. You’ll receive a mailing during the last week of October. Our campaign officially concludes on Sunday, Nov. 22, with an in-gathering of, and thanksgiving for,

all the pledges received.

So mark your calendars for:

Oct. 4, 5pm - BBQ Cook-off and Skit  
Oct. 11, 9am - Adult Forum  
Oct. 18, 11:45am – “K.I.S.S. – Keep It Simple, St. Philip’s” Luncheon Program

Hope to see you there, and there, and especially there!

Libby Lamancusa, Chair



...Three or more parishioners to tell us about a St. Philippian whose seemingly simple act(s) of kindness, hospitality, generosity or caring touched you or impacted your life. Perhaps something that deepened your love of God, or something that made you strive to show greater love for your neighbors. We know there are many of these stories out there, so please share one of yours by getting in touch with Libby Lamancusa at 301-774-6221 or [Libbmancusa@aol.com](mailto:Libbmancusa@aol.com)). Thanks!

The Stewardship Ministry invites you to St. Philip’s 3<sup>rd</sup> ANNUAL BBQ COOKOFF Sunday, October 4, 2009 at 5 pm. Our friendly competition will include BBQ, Baked Beans, Cole Slaw and the ever popular Dessert categories. Dust off your cookbooks in search of that winning recipe and don’t forget to sign up on our board in Wyatt Hall. Tickets are \$10 for adults, \$5 for children 5-10 and children under age 5 are free. Tickets will be on sale the three Sundays before the event as well as at the door. The Stewardship Ministry Team will also present a short skit. We hope to see you all there for this fun, fellowship event.



**Flower and Candle Dedication-** Is there an important event in your life or someone else’s that you celebrate? Have you considered dedicating flowers or a sanctuary candle? These dedications may be in honor of or in memory of someone you care about, or for a special event. After the last service, the flower delivery team will deliver altar flowers to someone on the pastoral care list. What a way to brighten their week! Look for the flower chart in Wyatt Hall and take an envelope, fill out the request form, add your check and place in collection plates, bring into office, or drop in the mail. Thank you!

Betsy Brothers



## This Year More Than Ever

It's been a tough year for nearly everybody, but in Laurel, a small victory was scored against homelessness this summer when two chronically homeless men moved into their own apartments under a HUD grant to Laurel Advocacy and Referral Services (LARS). Much hard work was done to get ready for "moving day": applying for the grant, two years of meetings with government officials, hiring a case manager, selecting the clients, furnishing the apartments, and monitoring the clients' progress. Five more clients are expected to enter the program before mid-2010.

Two down, but so many more to go! Homelessness is a complex problem that still plagues too many men, women, and children in this country. This year, Saint Philip's will hold its annual Help-the-Homeless Mini-Walk during the Sunday School hour (9:00-10:00 AM) on October 4<sup>th</sup>. The registration fees are still \$15.00 for youth (anyone between the ages of 6 and 25) and \$25.00 for adults. Registration forms will be available in Wyatt Hall starting on September 13<sup>th</sup>. All registered walkers receive T-shirts and everyone shares in juice and bagels after the walk.

On the day of the mini-walk, we'll meet for a short "homelessness" activity in Wyatt Hall for all ages. We will walk down Main Street to Fourth Street, returning on Prince George's Street. If a Sunday morning stroll is not for you, you can still participate by making out a check to **Help the Homeless** and giving it to Kerrie Allen, Cynthia Chase, or Jenny Wall. LARS will use this money to pay registration fees for youth walkers at our church or local schools whose parents can't afford the fee. This year it is more important than ever to register as many walkers as possible, because the Fannie Mae Foundation will award a **\$50,000 bonus** to LARS if it can register **at least 3000 walkers**. All fees will return to Laurel to help our homeless population.

Cynthia Chase

## LARS Update

### 5<sup>th</sup> Annual Turkey Trot

This 5K race will be held on Thanksgiving morning, November 26. There are three ways that you can help out: 1) We need a logo! Submissions should be original artwork incorporating a turkey-Thanksgiving and racing theme. The winner of the contest will receive a \$50 Target gift card and have their artwork featured on the front of the race day t-shirts, and other promotional race materials. All submissions for this contest are due no later than Friday, **October 9<sup>th</sup>**. Artwork can be mailed or hand delivered to: LARS, Attn: Turkey Trot Planning Committee, 311 Laurel Avenue, Laurel, Maryland 20707, or given to Kerrie Allen. 2) This year, the race has received a generous sponsorship from Laurel CarMax, but they are still seeking additional sponsors. If your business is interested, different sponsorship levels allow you to distribute advertising to the runners or have your company name or logo featured on race materials. See Kerrie Allen for details. 3) Sign up to run! Enjoy your dinner guilt-free after running a 5K. The course is USATF certified. If that's a bit much, you can do it as a Fun Walk. Sign-up forms are available from Kerrie, on the Wyatt Hall Bulletin board, or on the LARS website ([www.laureladvocacy.org](http://www.laureladvocacy.org)). You can also sign up for the Turkey Trot Facebook group.

### Holiday programs

LARS is now accepting applications for donors and recipients of their holiday program. Note: Recipients must have received other assistance from LARS in the past 12 months. If you would like to adopt a family, you may contact LARS directly. Closer to the holidays, there will also be opportunities to donate through St. Philip's.

Additionally, St. Philip's is scheduled to host Winter Haven the week after Christmas, so please mark your calendars now!

### Now hiring:

LARS is looking to hire for the following two positions. Please pass this along to anyone you know who might be qualified.

**Case Manager:** LARS is seeking resumes from qualified candidates for a full-time case manager to oversee the startup, implementation, and

*continued on p. 8*

**Prayer List Reminder:** When you wish to have someone added to the prayer list, please call the office with pertinent information, including an address, so that the person can receive a card from the parish if you wish. Also, please notify Leslie Cain so that she can ensure that the cards are sent: [cainsoflaurel@verizon.net](mailto:cainsoflaurel@verizon.net) or (301) 317-1742.



**NEED GROCERIES THIS WEEK?** Then you need a grocery card from St. Philip's! We have grocery cards for Giant, Weis and Shoppers—in \$10-\$100 denominations. For every card you buy, St. Philip's gets a rebate.

You can also register your Safeway Club Card. Please note that your Safeway Club Card must be renewed again for the 2009-2010 season. Go online to [eScrip.com](http://eScrip.com) and follow the link to sign up. Our ID number is 1036806. That way, every time you shop at Safeway and use your Club Card, St. Philip's gets a rebate from there too!

Buy a grocery card TODAY from Vi Turley and her crew after 8:00 service and see Joan Rattigan, Kama Hamilton or Terry Betzer after the 10:15 service. It's easy, you get food

and St. Philip's gets a \$\$\$ boost! All good!

**Ministry Opportunities:** If you would like to serve on the Altar Guild, or as a Lay Reader, Acolyte, Teller, Usher, or Eucharistic Minister (also called "Chalichists"), please contact the head of each ministry: Betsy Brothers for the Altar Guild; Amanda Colindres for the Lay Readers, as well as for the Acolytes; Elmer Jess for the Tellers; Linda Stapf for the Ushers, and Eileen Collins for the Eucharistic Ministers.

**THE GYPSY QUILTERS** are selling raffle tickets for their QUEEN SIZE QUILT in Wyatt Hall after each service on Sundays. Our goal is to raise \$3,000, and we are about one-third of the way there! What will the \$3,000 be used for? We hope to repair the hardwood floor in our church narthex (the area between the front doors and the glass doors of our worship space). The floor has suffered water damage and is in need of replacement. Tickets are \$5.00 each, or 5 for \$20.00. See Pat Higgins, or Vi Turley after church on Sundays. Drawing will be held when reserve is achieved. Contact Char Tolle if you have questions.

**Montpelier Mansion** will hold a **Hands-On History Day: Legends and Lore of the Piscataway Indians** on Sat., Oct. 17 from 10 am—12 pm. Members of the Cedarville Band of Piscataway Indians – dressed in traditional regalia – will be at Montpelier Mansion to demonstrate and teach native dances, tell stories, lead nature walks and teach crafts using natural materials. Open to all ages; **admission is \$7 and reservations are recommended.** Call (301) 377-7817

For all of you chocolate lovers, on Oct. 21 at 7:30 p.m. the Mansion will hold a **History Lecture-Chocolate: Food of the Gods!** This lecture is part of the Mansion's Fall Lecture Series (every Wednesday evening at 7:30 p.m. in Sept., Oct., and Nov.) Come hear food historian Pat Reber speak on everyone's favorite topic: chocolate! Learn how this most beloved of foods has been used throughout the centuries, from the ancient rulers of Mexico to the common chocolate shops in England. Admission is free **but reservations are required.** Call 301-377-7817. Samples will be provided!

**A Bare Cupboard**-Holly Days is fast approaching and Mrs Claus' attic is as bare as Old Mother Hubbard's cupboard. As you begin your autumn clean-up you might want to check out your closets and cupboards for an excess of cherishables. Mrs. Claus will accept vases, jewelry, china, bric-a-brac and all those "giftable" items you no longer need but know they could become someone else's cherished items, if just given the opportunity.

Another cupboard is also bare and that is the Village Sweet Shoppe. As you are making those jams, jellies, preserves, pickles, and special vinegars and sauces, how about setting aside a couple jars for the Shoppe. Visitors to the bazaar will be impressed with the culinary talents of our parishioners. To donate to Mrs. Claus' Attic please contact Kathy Macoughtry at 301-776-8954. (Note: Kathy has a personal relationship with Mrs. Claus.) Need information about Holly Days? Call Betsy Brothers 301-604-1981 or Kama Hamilton at 301-317-1204.

# OCTOBER VESTRY HIGHLIGHTS

The Vestry met on Tuesday, September 15<sup>th</sup>. The meeting was called to order at 7:08 p.m. The meeting began with an Opening Devotion and Bible Study. Jenny Wall Smith led the devotion and distributed the passages from Micah 6:08, "He has told you, O mortal, what is good; and what does the Lord require of you but to do justice, and to love kindness, and to walk humbly with your God; from Micah 7:18-20, "Who is a God like you, pardoning iniquity and passing over the transgression of the remnant of your possession? He does not retain his anger for ever..."; and from A Prayer Attributed to St. Francis, "Lord, make us instruments of your peace. Where there is hatred, let us sow love ..."

Jenny reflected that these passages suggest to her that at St. Philip's we all must look inside ourselves and see what we have to offer. She shared with Vestry members that she feels humbled by the knowledge that members of the Vestry and the parish carry each other and take the lead when others among us are struggling to find the energy to do so. Weekly community Confession allows us to reflect on these things we have "left undone," and to accept our shortcomings.

**Open Forum Time** – Nate Allen proposed that we give our quarterly \$500.00 contribution to LARS, early. Maureen Steinecke moved and Clif Collins seconded the motion to act on Nate's recommendation. The motion carried. By doing so, LARS can put our contribution toward its Turkey Trot fundraising effort for the homeless and obtain a matching contribution. St. Philip's would also

be named as a sponsor for the event, and our name would possibly be included on event T-shirts. Vestry members proposed asking the Women of St. Philip's whether they would like to follow suit so that LARS could benefit from a donation to match that from the Women of St. Philip's.

**Old Business – Treasurer's Report:** Amie Littmann was present at the meeting and distributed her Treasurer's Report to the Vestry members. We are currently operating at a loss of \$11,415.00. This loss has been covered by cash from the Undesignated Bequest Fund. So far, this loss is less than anticipated.

Tony Cain, Finance Committee Chairperson, brought the Vestry's attention to the upcoming budget year. Tony pointed out that 85% of our budget is comprised of fixed costs, *i.e.*, costs that we must pay every month including our mortgage, utility bills, salaries, etc. Pledges are the basis for our entire budget. Our income is comprised mostly of pledges. As members of St. Philip's, we all need to reflect on our priorities. How are we spending our money? Who does St. Philip's help? Are we giving enough to support the mission and ministry that we want to see at St. Philip's? Tony suggested that he address the Parish to fully inform members about the positive things that are happening at St. Philip's to conserve our financial resources and to increase our income.

Joanne Woytek pointed out that if members were to increase their pledges by just \$5.00 a week, we would nearly close the budget gap that we have this year. Maureen Steinecke pointed out that in the United States the Dioceses

do not help to financially support individual parishes. This is not the case throughout the Anglican Communion.

## **Old Business – Stewardship**

**Goal for 2010:** Our goal for 2010 is bring in \$300,000.00 in pledges and building fund designations. The Vestry would love to see the number of pledging units increase. In both 2008 and 2009 we had 117 pledge units. In 2009 approximately \$283,000.00 was either pledged or designated for the building fund. We are operating at a deficit for fiscal year 2009 and have been using cash from an undesignated bequest fund to cover the shortfall.

## **Old Business – Property Core Team (PCT) Update:**

A significant leak from the McKee room roof was detected by Sexton James Hall. Water was apparently pouring in from the ceiling and filling a light fixture. Junior Warden Tracy McCracken reported to the Vestry that the issue turned out to be a caulking problem. The estimate to repair the problem is \$568.00. The Vestry approved the repair to avoid a larger and more expensive problem in the future.

## **Old Business – Stewardship**

**Committee Report:** The Stewardship Committee's request for a fundraising Bar-B-Q Cook-Off was approved. The dinner will take place on Sunday, October 4<sup>th</sup>.

This year's Stewardship Campaign theme is, "Keep it Simple St. Philip's (K.I.S.S.)." On

*continued on p. 2*

## October Vestry Minutes....continued from p. 2

benefits of serving as a field education site, the Vestry decided to apply to Virginia Theological Seminary (VTS) to serve as a field education site for a VTS seminarian.

**New Business – Audit Report:** Debbie Dusterwald presented the findings of the 2008 Audit of St. Philip's. Members of the audit committee were Debbie (5<sup>th</sup> year on audit committee), Benda Bushnell, Pat Higgins, Linda Stapf and Vi Turley. The members of the Audit Committee followed the Manual of Business Methods in Church Affairs. The Committee took steps to make sure that all financial statements present fairly the financial position of the Congregation as of December 31, 2008. The Audit Committee made recommendations in its report including, but not limited to, the following: inventory fixed assets for insurance purposes; charter an inventory committee early each year; and Finance Committee review financial reports on a quarterly basis. The audit committee reported all apparent discrepancies to the Finance Committee and the Treasurer and all apparent discrepancies have been resolved.

**“Big Hairy Audacious Goal” (BHAG) – Financial Priorities (Stewardship Campaign, Save-the-Nave Campaign, and Capital Campaign):** The Vestry discussed the order of priorities of these three fundraising goals. Our stewardship campaign is our first priority because this campaign determines our budget for 2010.

Doug Hayes expressed his optimism that a successful Save-the-Nave campaign could energize a larger Capital Campaign. The Vestry's understanding of our Capital Campaign is that it would encompass a large fundraising effort made up of four or five Save-the-Nave type events over the course of three to five years.

Pam Brown commented that the Grant Subcommittee is pursuing grants to replace, repair or refurbish aspects of our physical structure and property. Pam stressed that the Parish must know how much work there is to be done.

Maureen Steinecke wondered if there was any way to allocate money to pay down the principal on our Wyatt Hall mortgage. Each month we pay \$4,000.00 toward the mortgage. The terms of our

loan are subject to renegotiation next year. The meeting was adjourned at 9:08 p.m. after a Closing Prayer.

Respectfully submitted,  
Amy Brennan  
Clerk of the Vestry

## Thank You

*To Our St. Philip's Family,*

*We want to thank everyone at St. Philip's for their prayers, cards, and thoughtfulness during my surgery and recovery. It was very comforting to be part of such a loving and supporting community.*

*Love,  
Pat Whisnant & Family*

## LARS....continued from p. 5

of the **Rapid Re-Housing Program**. Candidates should have a MSW and be licensed (and in good standing) as a social worker in the State of Maryland. Work experience in programs that specialize in housing, crisis work and/or homeless services is preferred.


**Bilingual Outreach Worker:** LARS is seeking a full-time Bilingual Outreach Worker (Spanish/English) to provide case management, support and outreach services to the LARS service seekers who speak Spanish as their first language. Qualified applicants must be fluent in Spanish and English. MSW with Maryland license preferred. BSW's or degrees in human service fields with experience in crisis work, homeless services and case management may be considered. Qualified candidates may forward a resume and cover letter to:

Laurel Advocacy and Referral Services, Inc.  
C/O: Nancy Graham, LCSW-C, Executive Director  
311 Laurel Avenue  
Laurel, Maryland 20707  
Fax (301) 604-7076


Kerrie Allen  
St. Philip's Representative  
LARS Board of Directors



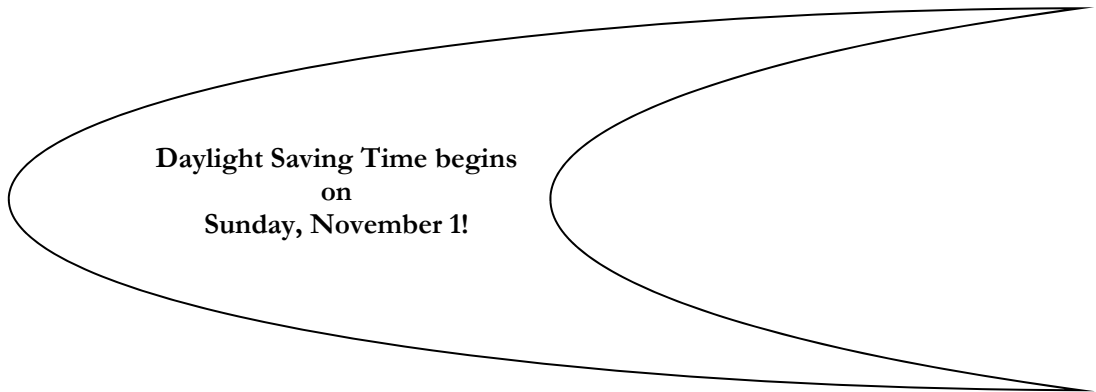
# OCTOBER CALENDAR OF EVENTS

| SUN  | MON.   | TUES  | WED  | THURS 1   | FRI 2   | SAT 3  |
|--|--|---|--|---|---|--|
|   |  |   |  |   |   | 10 am Teenage Moms' Friends Club—PH<br><br>5pm Wedding Reception—WH          |
| 8 am HE Rite I 4<br>9 Help the Homeless Walk<br>9 Sunday School<br>10:15 HE Rite II & Blessing of the Animals<br>11:30 Youth Choir<br>12 pm on Stewardship—WHCR<br>Youth Group—Time TBD<br>4 Assembly of God of NY Church—LC<br>5 Assembly of God of NY—PHDCR<br>5 Bar-B-Que Cook-Off—WH                         | 5<br><br>Region 5 Assembly<br><br><br>7:30 pm Bell Choir | 6<br><br>7pm Vestry Executive Committee Crafters Quilters             | 7<br><br>10 am Bible Study—WH CR<br><br>7 pm Yoga—WH<br><br>Rector's Book Study                        | 8<br><br><br><br>7:30 pm Adult Choir  | 9<br><br><br><br><br><br>Acolyte Festival @ The Cathedral | 10<br><br>10 am Teenage Moms' Friends Club—PH                                |
| 11<br><br>8 am HE Rite I<br>9 "Keep It Simple" Stewardship Adult Forum-WH<br><br>9 Sunday School<br><br>10:15 HE Rite II<br><br>11:30 Youth Choir<br><br>12pm Enhanced Coffee Hour<br>4 Assembly of God of NY Church—LC<br>5 Assembly of God of NY Church—PHDCR<br><br>PHDCR = PARISH HOUSE DOWNSTAIRS CLASSROOM | 12<br><br>7 pm Toastmasters<br><br>7:30 Bell Choir       | 13<br><br>1 pm Afternoon Guild—WH<br><br>7pm Crafters<br><br>Quilters | 14<br><br>10am Bible Study—WH<br><br>7 pm Rector's Book Study<br><br>7 Yoga—WH<br><br>7 Girl Scouts—PH | 15<br><br><i>Messenger</i> Deadline<br><br>6 pm Smart Recovery—PHDCR<br><br>7:30 pm Adult Choir | 16<br><br>12:30 pm Presentation on Columbarium—WH CR      | 17<br><br>9 am Men's Breakfast—WH<br><br>10 am Teenage Moms' Friends Club—PH |

# OCTOBER CALENDAR OF EVENTS

| SUN 18  | MON. 19            | Tues 20  | WED 21  | THURS 22   | FRI 23 | SAT 24  |
|---|--------------------|--|---|--|--------|---|
| 8 am HE Rite I<br>9 Sunday School<br>10:15 HE Rite II<br>11:30 Youth Choir<br>12 pm Youth Group<br>12 PCT—PH CR<br>12 “Keep it Simple” Stewardship Luncheon—WH<br>4 Assembly of God of NY Church—LC<br>5 Assembly of God of NY Church—PHDCR | 7:30 pm Bell Choir | 7 pm Vestry Meeting—WH CR<br><br>Crafters Quilters | 10 am Bible Study—WH CR<br><br>7 pm Rector’s Book Study<br><br>7 Yoga   | 6 pm Smart Recovery—PHDCR<br><br>7:30 pm Adult Choir |        | 10 am Teenage Moms’ Friends Club—PH<br><br>5 pm Raeder Wedding Reception—WH   |
| 25  | 26                 | 27   | 28  | 29   | 30     | 31  |
| 8 am HE Rite I<br>9 Sunday School<br>10:15 am HE Rite<br>11:30 Youth Choir<br>4 pm Assembly of God of NY Church—LC<br>5 pm Assembly of God of NY Church—PHDCR   | 7:30 pm Bell Choir | 7pm Crafters Quilters                              | 10 am Bible Study<br><br>7 pm Yoga<br><br>7 Finance Cmte. PH CR<br><br>7 Celebratory Dinner Wrapping up Rector’s Book Study<br><br>7 Girl Scouts PH | 6pm Smart Recovery—PH DCR<br><br>7:30 Adult Choir    |        | 10 am Teenage Moms—PH CR<br><br> |

Remember to set your clocks back one hour on Saturday, October 31!



***The Messenger***

St. Philip's Episcopal Church

522 Main St

Laurel, MD 20707-4118

[www.stphilipslaurel.org](http://www.stphilipslaurel.org)

**FIRST CLASS POSTAGE**



Daylight Saving  
Time Begins on  
Sun., Nov. 1st!

Don't forget to visit St. Philip's  
Web site at:  
[www.stphilipslaurel.org](http://www.stphilipslaurel.org)

